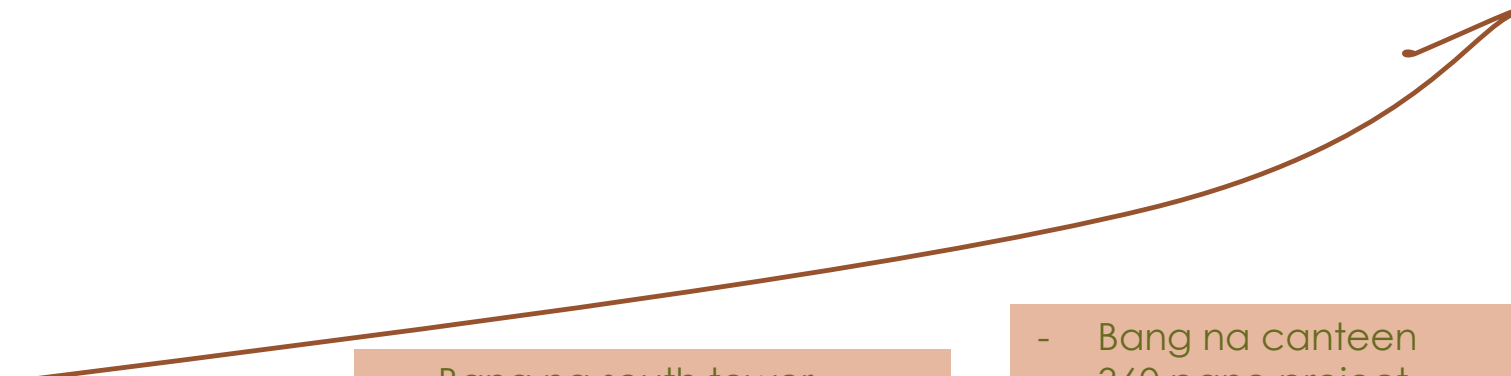




Business Presentation

**P17 COMPANY LIMITED.**

# HISTORY

- 
- Centerpoint as-built
  - Top's House
  - Condominium
  - Townhome

**2011**

- Bang na south tower
- Supalai
- Ict teohong silom
- Central plaza suratthani
- Condominium @ suratthani
- His & her salon
- Bang na canteen

**2012**

- Bang na canteen
- 360 pano project
- Thanapat
- Mansion Resort
- PRINSIRI,RTNTB
- Ladawan
- Bornthep's residence
- Fuse phuket

**2013**

- Khun Golf Private Residence
- toey@house
- The Nest
- 360 Pano Khao Yai
- Phu Prapai
- Royal Gems Phuket
- S&P Thonglor
- 360 Pano – Condo
- Daniel Lindgren's Waterford
- Lakewood – Restaurant
- TVO
- BNT C Lobby
- BBQ

**2014**

# HISTORY

- The rhythm sukhumvit 441
- 8 square 64
- Aew hua suki
- BECI OFFICE BUILDING
- Ole
- Meeting room
- Cm1
- Krungsri
- THONG-LOR condominium\_14<sup>th</sup>
- THONG-LOR condominium\_23<sup>th</sup>
- Maleenont FL-29
- Chewathai

**2015-2016**

- OSOTSPA mail room
- Sodexo renovation coffee shop
- THAI OIL
- Tame 3
- Plum ram60
- BDK HOSPITAL NEW CAFÉ
- Sodexo Paolo Memorial Hospital Canteen
- Nokia Stair,Floor,Access Control
- The Room Phayathai
- OSOTSPA\_Audit Room
- Royal gems
- The Nest-Lobby
- Restaurant design ideas
- THS Silom Lobby Renovation
- The Nest Mockup
- Sodexo Bangkok Hospital Phuket Coffee shop

**2017**

- Sodexo phyathai nawamin – kitchen
- Nokia film
- Nokia rack
- Nokia lan
- Sodexo\_bangkok hospital phuket kitchen
- Pfizer
- Sodexo\_samitivej srinakarin hospital canteen
- Sodexo nong krathum school
- Un
- OSOTSPA lighting outlet lan
- Sodexo\_lycée français international de bangkok
- Osotspa\_battle ground
- Nina\_home
- Nokia\_door
- Osotspa demolition
- Concordian international school
- Nina\_home
- Tronika\_jp morgan
- Sodexo\_nokia\_access point
- P&G canteen
- Sodexo\_concordian international school
- Sodexo\_vch
- Goldenlan

**2018**

# HISTORY

- Patio Viphavadee-Songprapar
- DHL Ramp
- Pfizer (Thailand) Limited
- DHL Courier Platform template
- Sodexo\_Tetra Pak (Emergency Light)
- Sodexo - Stamford International University (Thailand)
- 3M Ladkrabang : Office Renovation
- 3M Ladkrabang : CTC\_Acoustic LAB (DEMOLITION & NEW WALL)
- 3M Ladkrabang : Office Renovation (LAN)
- 3M Ladkrabang : Office Renovation (TV)
- 3M Ladkrabang : Measurement room(Acoustic Lab)
- 3M (IR Touch Screen)
- 3M Ladkrabang : CTC\_Acoustic LAB (AIR DUCT WORK)
- 3M Ladkrabang : Car Park
- 3M Ladkrabang : Motorcycle parking
- 3M Ladkrabang : Stair
- 3M Ladkrabang : CTC\_Acoustic LAB

**2019**



## **ABOUT THE COMPANY**

OUR STORY

MISSION

PHILOSOPHY

PRODUCTS AND SERVICES

KEY ACHIEVEMENTS



## **OUR PEOPLE**

EXECUTIVE TEAM

NEW EMPLOYEES

ANNIVERSARIES



## **CLOSING**

SUMMARY

QUESTIONS AND

ANSWERS



## **2019 RESULTS**

PERFORMANCE

SURVEY RESULTS

HIGHLIGHTS /LOWLIGHTS

KEY PROJECT UPDATES



## **2020 PLANS**

ASPIRATIONS

NEW INITIATIVES

KEY METRICS

# AGENDA

PRESENTATION SUBTITLE

## P17 COMPANY LIMITED.

We Have Completed Above 250 Projects Residential And Commercial In Past 9 Years. We Promise To Delivery A High Aesthetic Value And High Quality Interior Buildout For Every Clients. P17 Has Project Experience In Fields Such As Private House, Condo, Service Apartment, Hotel, Healthcare, Education, Office, Retail Design, Restaurant And Many More. P17 Services Span From Space Planning, Design, 3D Visualization, Working Drawings And Construction Details To Supervision Of Construction.

## ABOUT THE COMPANY

PRESENTATION SUBTITLE

## INTERIOR

THIS KEY DEPARTMENT WITHIN P 17 COMPANY LIMITED HAS RAPIDLY DEVELOPED A DESIGN AND CONSULTANT. OUR TALENTS ARE NOT JUST TIED TO THE CORPORATE SECTOR. BUT ALSO TO THE OFFICE, HOTEL AND RESIDENTIAL SECTORS BY SEAMLESSLY COMBINING FUNCTIONALITY WITH STYLE AND MAKING FULL USE OF THE IMPRESSIVE ENVIRONMENTALLY SOUND FEATURES IN THE MARKET PLACE. WE ARE ABLE TO PROVIDE INNOVATIVE SOLUTIONS FOR OUR CLIENTS.

## TURN KEY

DEPARTMENT RAPIDLY INTERIOR, DEVELOPER AND CONSULTANT TO TALENTED WITHIN THE HE KEY SECTORS IS OFFICE, HOTEL, RESTAURANT AND RESIDENTIAL

## SERVICE SCOPE

PRESENTATION SUBTITLE

PROFESSIONAL DESIGN AND  
CONSULTING TEAM....  
COMMITTED TO EXCELLENCE SOLUTIONS

PHILOSOPHY

PRESENTATION SUBTITLE

# INTERIOR DESIGN

We Provide Innovative Design Solutions For Our Clients. A Key Discipline Within P17, We Have Rapidly Developed A Reputation Among Key Local And Multinational Firms For Providing Some Of The Most Stunning And Clever Work Place Concepts Seen In Thailand And Beyond. Our Talents Are Not Just Limited To The Corporate Sector. Hospitality And Residential Projects Have Also Been The Subject Of Industry Awards Due To Our Ability To Seamlessly Combine Functionality With Style And Make Full Use Of The Impressive Environmentally Sound Materials In The Market Place.



# TURN KEY

## Project Management

Our Project Managers ensure that the project runs smoothly and as scheduled. They ensure that the risk to the completion of the project is mitigated to the lowest for many of our clients.

P17 Nigeria Project managers become responsible for the co-ordination of the design between the various departments. This eliminates the possibility of variations during the construction phase as a result of conflicts in design documentation.

Their job also takes into account every assigned contractor to that project making sure that all departments are all in sync and their functions are coordinated properly



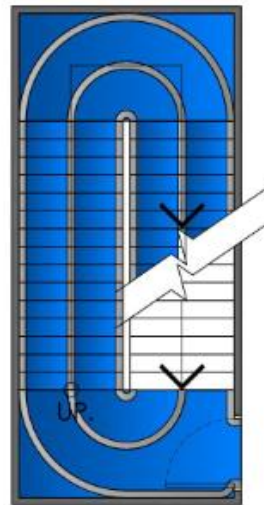
———— **ENGINEER TEAM** ————

# REFERENCE PROJECT

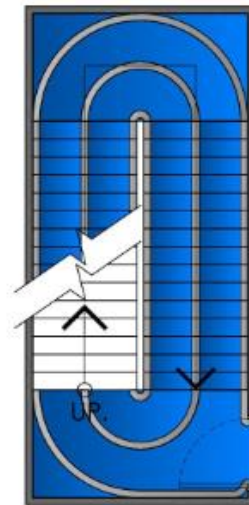
## NOKIA

EPOXY : SPORT

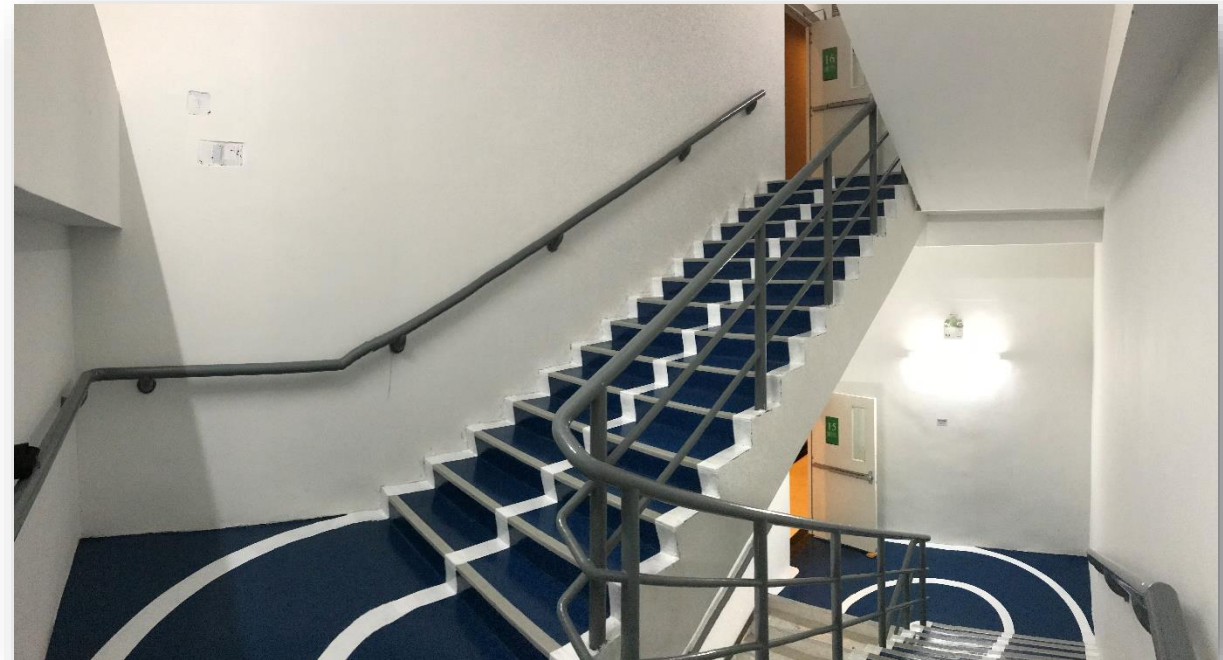
TRACK OFFICE NOKIA THAILAND



01 PLAN FL.15  
SCALE 1:50



02 PLAN FL.16  
SCALE 1:50



# REFERENCE PROJECT



120 YEARS

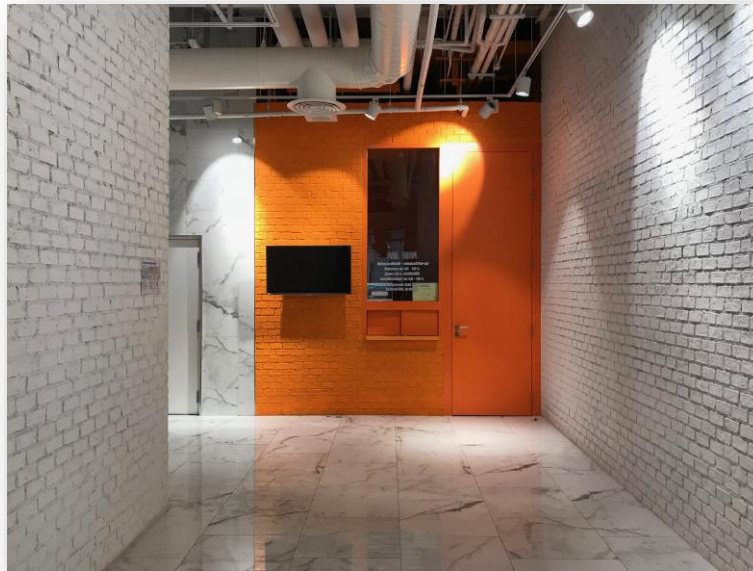
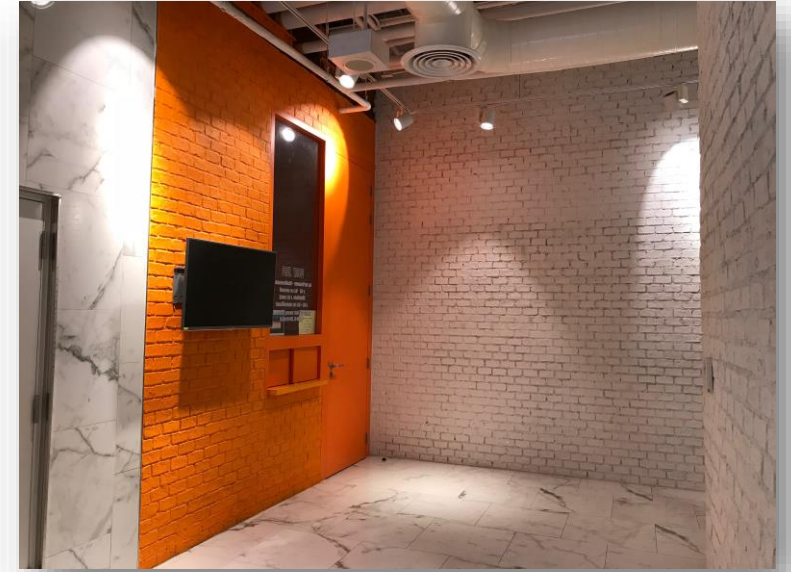
OSOTSPA

PROJECT

SCOPE

: MAIL ROOM

: OFFICE RENOVATE



# REFERENCE PROJECT



120 YEARS  
OSOTSPA

PROJECT : AUDIT ROOM  
SCOPE : OFFICE RENOVATE



# REFERENCE PROJECT



120 YEARS

OSOTSPA

PROJECT

: PROJECTOR

SCOPE

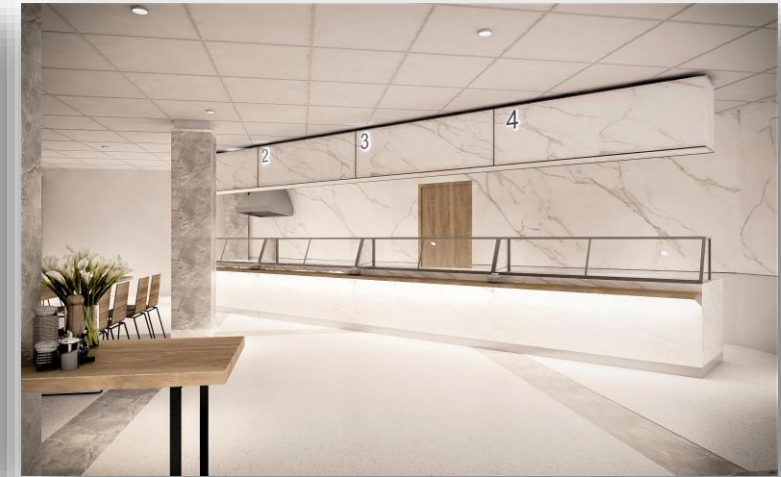
: PROJECTOR RENOVATE



# REFERENCE PROJECT

# P&G

PROJECT : P&G CANTEEN  
SCOPE : CANTEEN RENOVATE



# REFERENCE PROJECT



PROJECT : LE CAFÉ

SCOPE : CAFE SHOP



# REFERENCE PROJECT



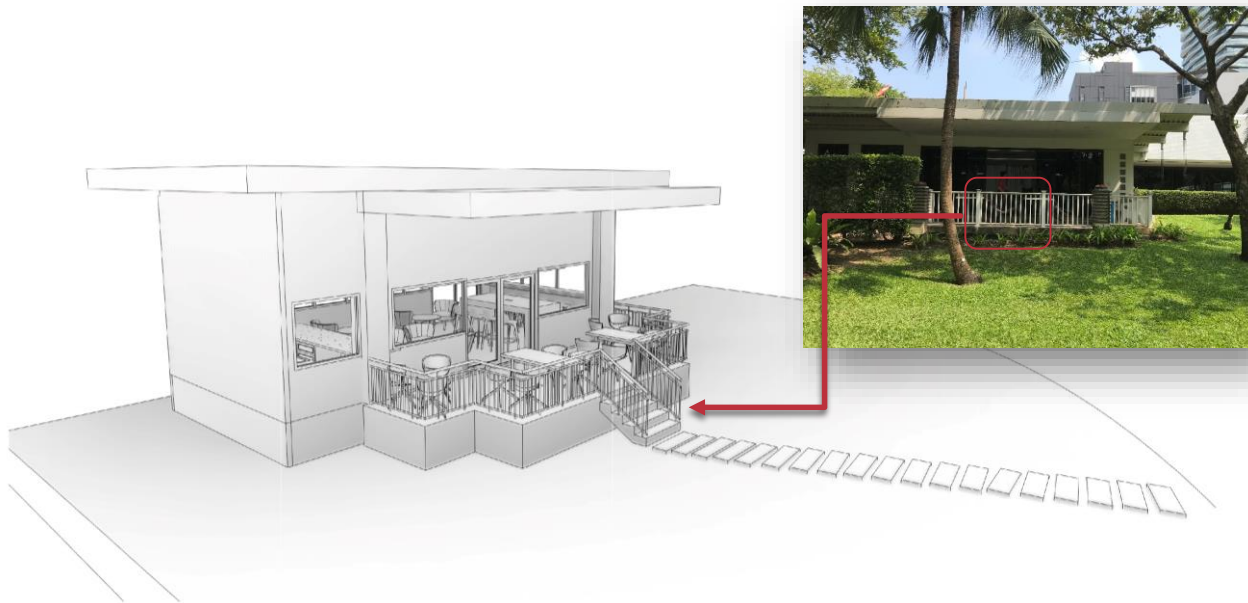
PROJECT : PAOLO CANTEEN  
CANTEEN : RENOVATE



# REFERENCE PROJECT



PROJECT : SCG CANTEEN  
SCOPE : CANTEEN RENOVATE



# REFERENCE PROJECT



United  
Nations

PROJECT : UN CANTEEN  
SCOPE : CANTEEN RENOVATE



# REFERENCE PROJECT



PROJECT : DHL RAMA III  
SCOPE : TOILET ROOM RENOVATE

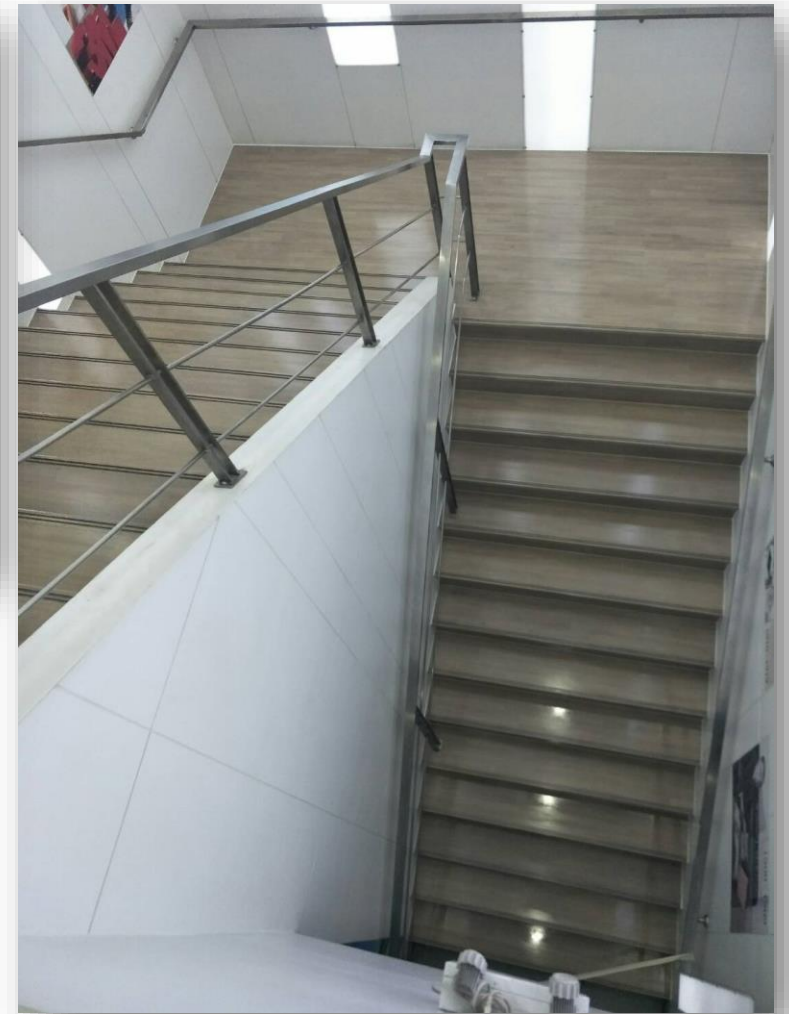
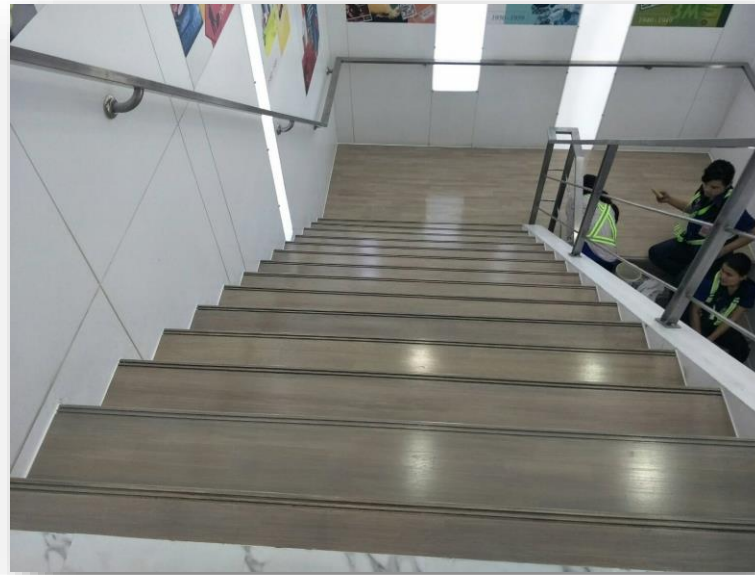


# REFERENCE PROJECT



PROJECT : 3M STAIR

SCOPE : STAIR RENOVATE



# REFERENCE PROJECT



PROJECT : 3M DESIGN ROOM

SCOPE : DESIGN ROOM RENOVATE



# REFERENCE PROJECT



PROJECT : 3M TRAINING ROOM  
SCOPE : DESIGN ROOM RENOVATE



---

# REFERENCE PROJECT



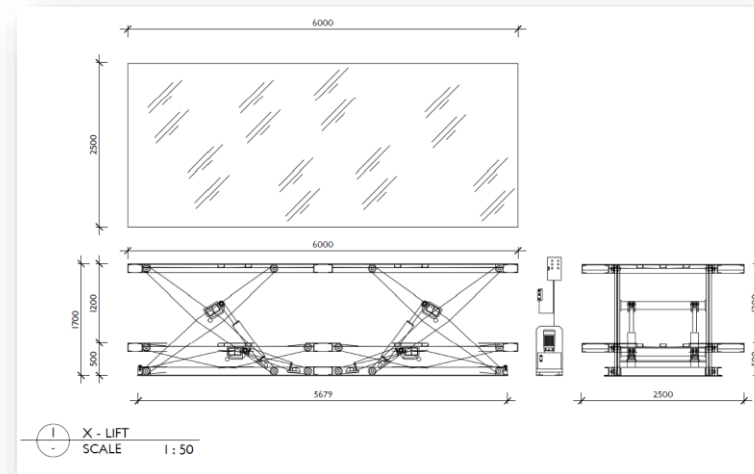
PROJECT : 3M CAR CARE  
SCOPE : ARCHITECTURE



# REFERENCE PROJECT



PROJECT : 3M ACOUSTIC LAB PHASE I  
SCOPE : DEMOLITION & NEW WALL



# REFERENCE PROJECT



PROJECT : 3M CAR PARK

SCOPE : CAR PARK



## REFERENCE PROJECT

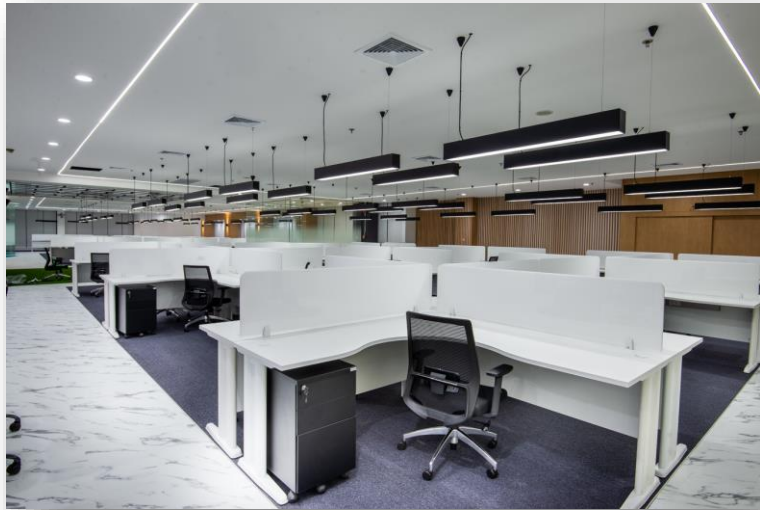


PROJECT : CTC OFFICE THAILAND  
SCOPE : CAR PARK



# REFERENCE PROJECT

# 3M



## REFERENCE PROJECT



3M™ Glass Finishes

3M™ FASARA™ Glass Finishes

How do you give interior spaces that “wow factor” that makes people sit up and take notice? Sometimes it can be as simple as introducing an extraordinary detail to the mix. With their unique palette of colors, patterns and textures, 3M™ Glass Finishes give you an easy way to add an element of surprise to your designs.

We offer you three distinct options to choose from: 3M™ FASARA™ Glass Finishes, 3M™ CRYSTAL Glass Finishes and 3M™ DICHROIC Glass Finishes. All are

ideal for privacy and decorative applications in offices, hotels, retail stores, restaurants and healthcare environments. Each can be easily customized to suit the needs of your individual projects and are easy to apply and maintain. 3M Glass Finishes are highly versatile. Consider using them for communicating messages in unexpected ways, making small areas feel larger and adding privacy without sacrificing light. The possibilities are as unlimited as your imagination!



---

## REFERENCE PROJECT



### 3M DI-NOC

#### Architectural Finishes

3M" DI-NOC" Architectural Finishes can be applied to a wide variety of surface materials, allowing infinite creativity. With the addition of 225 new patterns that incorporate the latest trends, more than 1,000 different designs are now available. The new Matte Series utilizes the latest technology available, including Solid Color, with deep, rich colors, Dry Wood, with the appearance of natural wood, and Industrial Texture, with an industrial and an organic feel. The diverse selection of additional unique designs maximizes interior design possibilities and includes Oxidized Metal, which simulates an anodized coating, and Textile, with a delicate woven texture. Experience greater design freedom with DI-NOC architectural finishes.



# REFERENCE PROJECT



## สถิติความปลอดภัยในการทำงาน

### SAFETY STATISTIC

|  |     |                |
|--|-----|----------------|
| เป้าหมาย   | 123 | วัน            |
| TARGET   |     | Day            |
| เราเคยทำงานมาแล้ว โดยไม่มีอุบัติเหตุถึงขั้นหยุดงาน | 97  | วัน            |
| TOTAL WORKING HOUR WITHOUT A LOST TIME ACCIDENT    |     | Day            |
| เกิดอุบัติเหตุครั้งสุดท้าย                         |     | วัน/เดือน/ปี   |
| LAST ACCIDENT OCCURRED                             | —   | Day/Month/Year |

หมายเหตุ เริ่มนับตั้งแต่ 1 พฤษภาคม 2562 ถึง 31 สิงหาคม 2562



Thank you  
P17 COMPANY LIMITED.